

**PUBLIC HEARING ON  
PROPOSED SOLID WASTE  
DISTRICT RATES & CHARGES**

ORC §343.08



# **PUBLIC HEARING SWD RATES & CHARGES**

**SWD Organization**

**SWD Program Requirements**

**SW Plan**

**Funding Options**

**Funding History**

**Tonnage History**

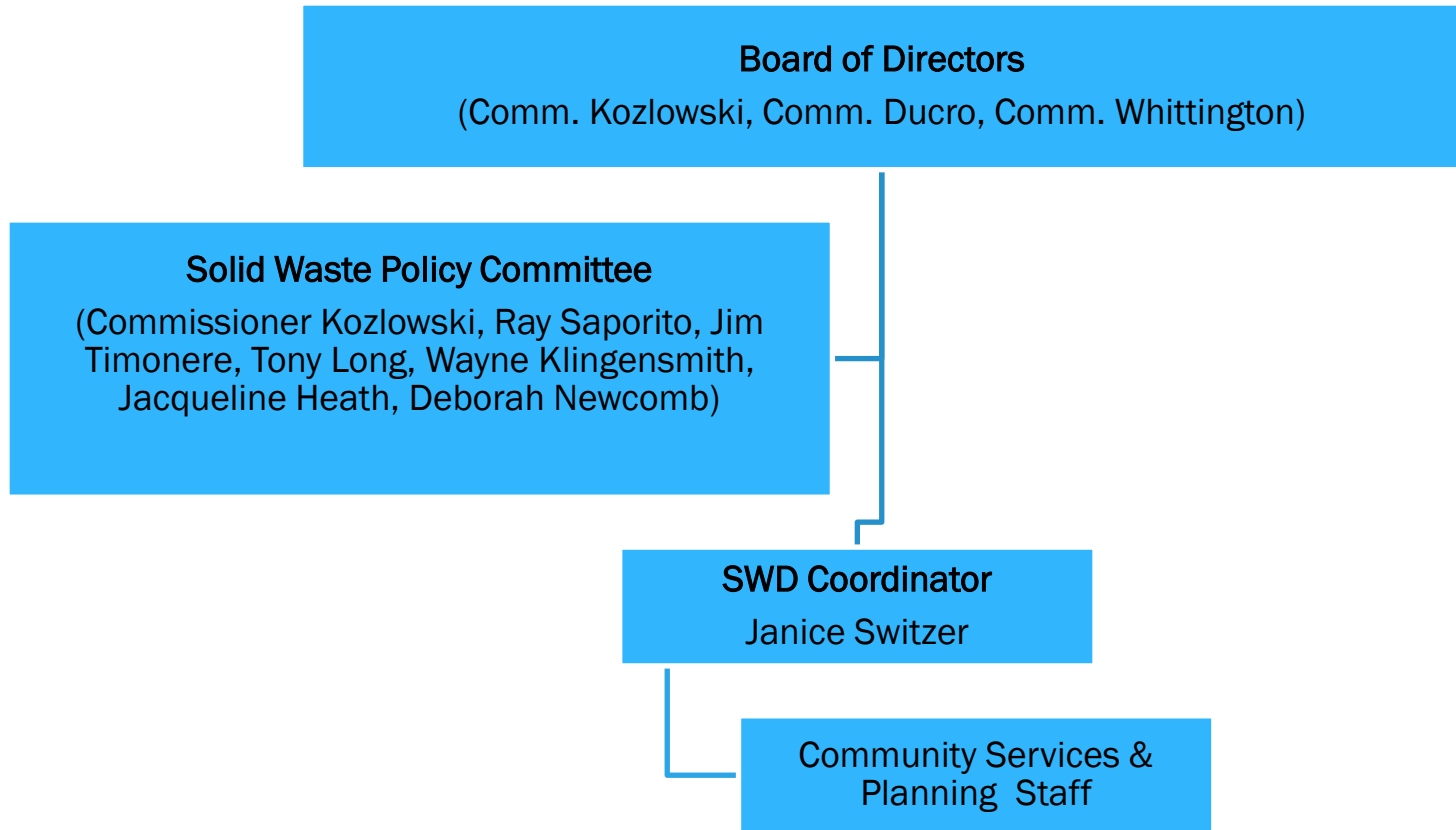
**Policy Committee Recommendation**

**Proposed Rate & Charge**

**Programs to Be Offered**



# SOLID WASTE MANAGEMENT DISTRICT



# SWD PROGRAM REQUIREMENTS

SWD created in 1988 by HB592

State SW Plan Requires Districts Provide:

- Recycling Infrastructure/Access – 90%
- Waste Reduction and Recycling Rates – 25%/66%
- Outreach and Education
- Restricted Solid Waste Management – HHW/Tires/Electronics
- Economic Incentives
- Market Development
- Reporting



# SOLID WASTE PLAN

Districts must submit a ratified SW Plan to OEPA every 3-5 years

Ashtabula County SWD formed in 1993 after separating from  
Ashtabula/Trumbull/Geauga SWD

1994 – Ratified 10 year Plan

1997 – Ratified 15 year Plan

2002 – Ratified 15 year Plan

2007 – 15 year Plan not ratified

2014 – OEPA Written 10 year Plan

2017 – Draft 15 year Plan submitted



# FUNDING OPTIONS

## Tier Fees \* - current funding

- In District \$1-\$2/ton
- Out of District – In State \$2-\$4/ton
- Out of State -\$1-\$2/ton

## Generation Fees

- Rate established/ton

## Designation Fees

- Rate established /ton

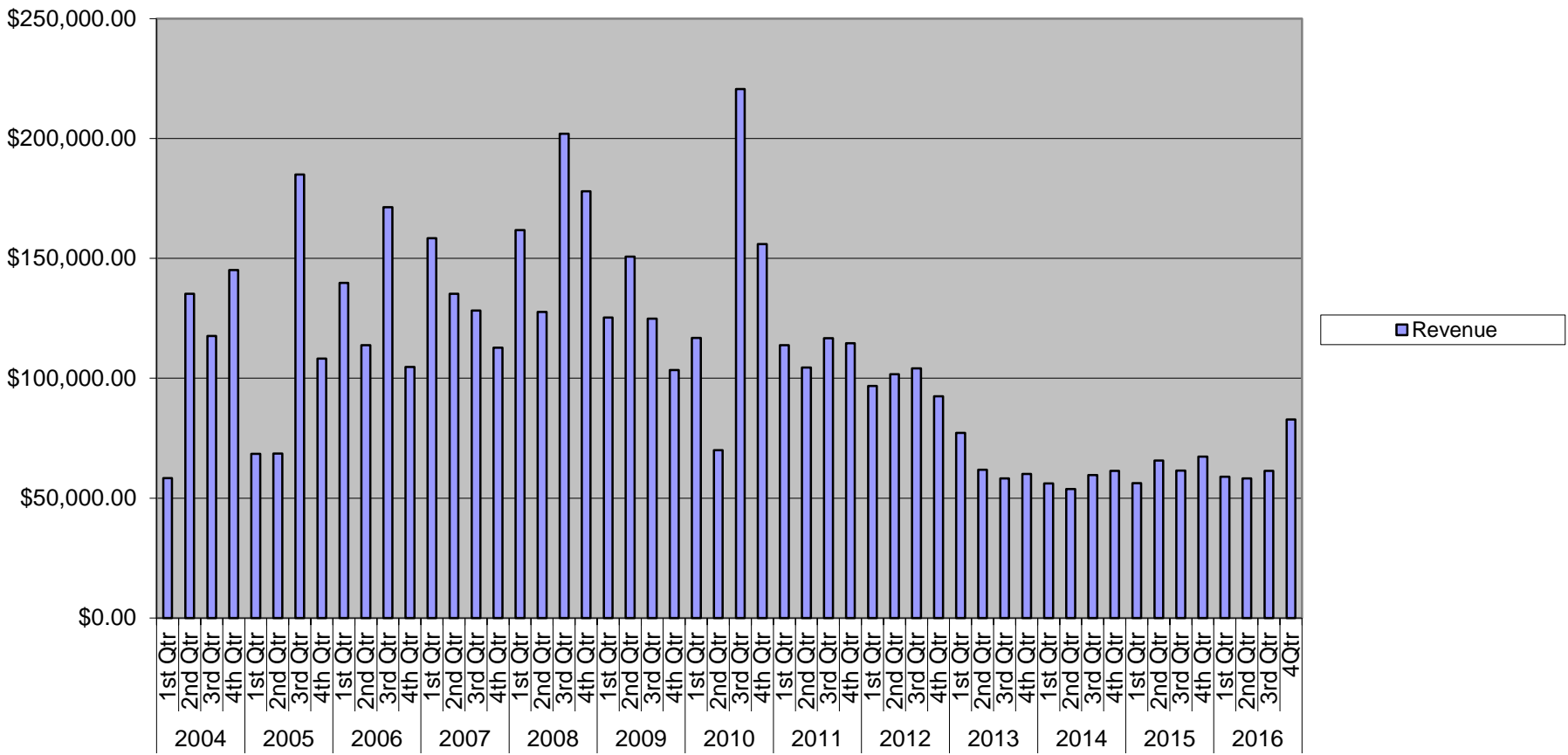
## Rates and Charges

## General Revenue

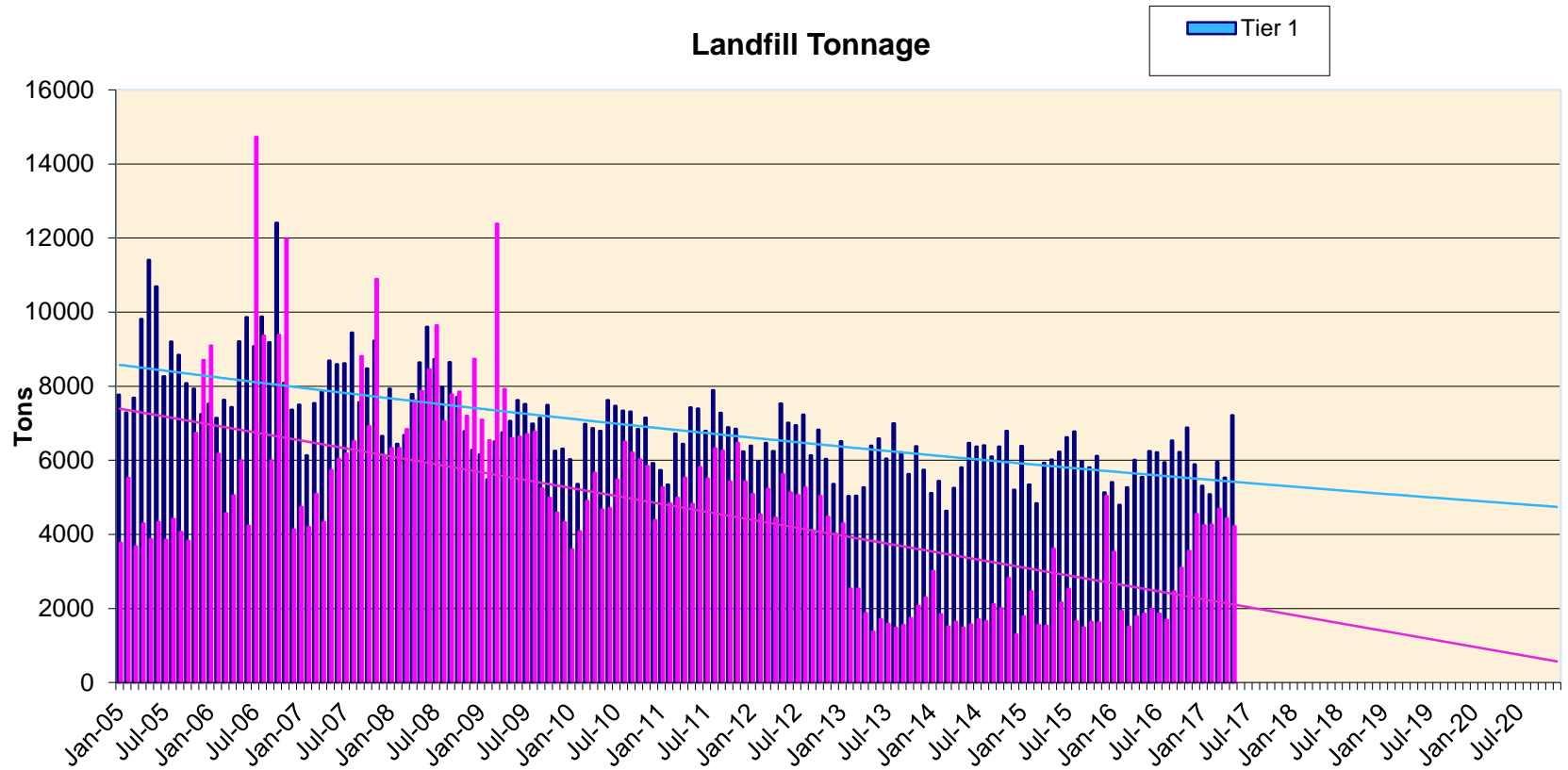


# FUNDING HISTORY

## SWD REVENUE



# TONNAGE HISTORY-PROJECTION





# POLICY COMMITTEE RECOMMENDATION

## Reviewed funding options

- Tier Fees maxed out
- Generation Fee adversely affects large generators (Industries & City of Ashtabula)
- Designation Fee similarly affects large generators
- Generation and Designation Fees collected by landfill and passed on to public by increases in hauler rates – likely higher than actual rate increase.
- Rates and Charges – only funding not linked to solid waste disposal



# **POLICY COMMITTEE RECOMMENDATION CONT.**

**Compared funding to other Ohio SWD's**

- Rates/Charges vary from \$5/parcel - \$20/parcel
- Gen Fee/Designation Fee vary from \$.5/ton - \$10/ton

**Reviewed the decline in tonnage**

**Policy Committee recommended to Board of Commissioners to implement Rates & Charges to supplement funding for SWD.**

# PROPOSED RATE & CHARGE

Need to make up \$170,000 - \$190,000 annually in budget

Amount needed calculated on # of improved parcels & 92% collection rate

Draft SW Plan shows a need for \$4.75/improved parcel by year 2023 in 15 year plan

If implemented by September 7, 2017 the Charge will be certified to County Auditor on September 12<sup>th</sup> for 2017 real estate tax duplicate (to be paid in 2018)

Proposed programs will begin in 2018



# PROGRAMS PROVIDED WITH RATES/CHARGES

Annual Household Hazardous Waste Collection

Annual Tire Collection

Education and Awareness

Recycling Drop-off locations throughout the County

Environmental Enforcement

Community Recycling/Clean-up Grants\*

\* Communities with non-subscription curbside recycling will be given priority points



**PUBLIC HEARING ON PROPOSED  
SOLID WASTE DISTRICT  
RATES & CHARGES**

**Comments**

